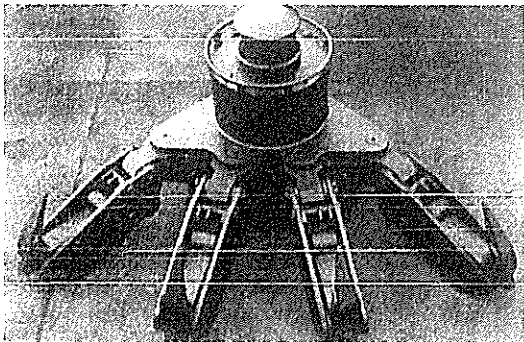
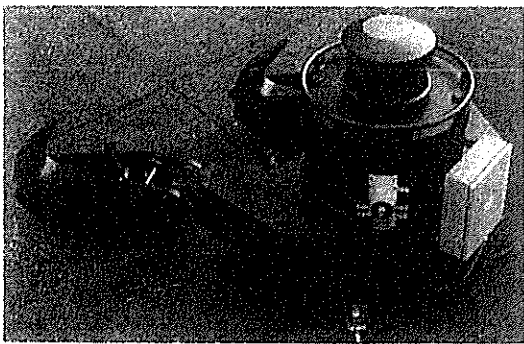


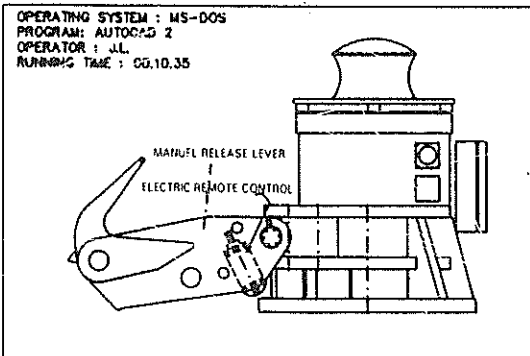
RELEASED BEFORE YOU CAN SAY IT



QUICK RELEASE MOORING UNIT TYPE 4 x 125 MK



QUICK RELEASE MOORING UNIT TYPE 2 x 125 MK



OPERATING SYSTEM : MS-DOS
 PROGRAM : AUTOCAD 2
 OPERATOR : J.L.
 RUNNING TIME : 00.10.35

CAD/FE feature enables STEDITEK to produce in a minimum of time tailor made equipment

STEDITEK equipment is designed, manufactured and tested to serve quickly under all circumstances. The program claims unique items and broad application range.

- * QUICK RELEASE MOORING HOOKS
- * ELECTRIC, HYDRAULIC or PNEUMATIC REMOTE CONTROL SYSTEMS
- * LOAD MONITORING
- * CUSTOMER MADE FASTENING HARDWARE
- * TOWING HOOKS FOR TUG BOATS
- * BUOY MOUNTED HOOKS
- * CONSULTING AND INSTALLATION SERVICES
- * CAD/FE FEATURE
- * VERITAS OR LLOYD's CERTIFICATE

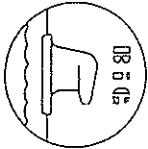


ADVANCED MOORING EQUIPMENT

Grendelbaan 52-54
 B-3610 Diepenbeek
 BELGIUM

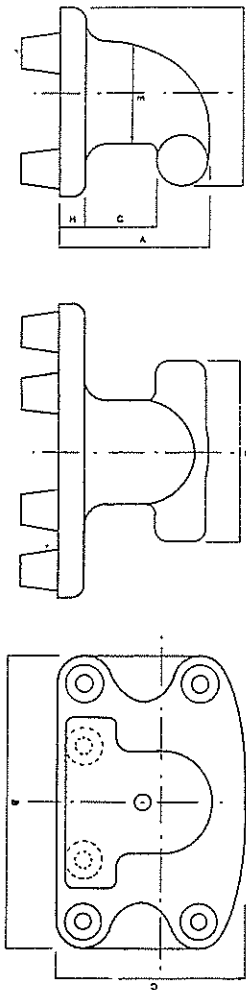
TEL 32-11 32 35 92
 TLX 39256 STEDIE B
 FAX 32-11-32 3518

BYGGMA



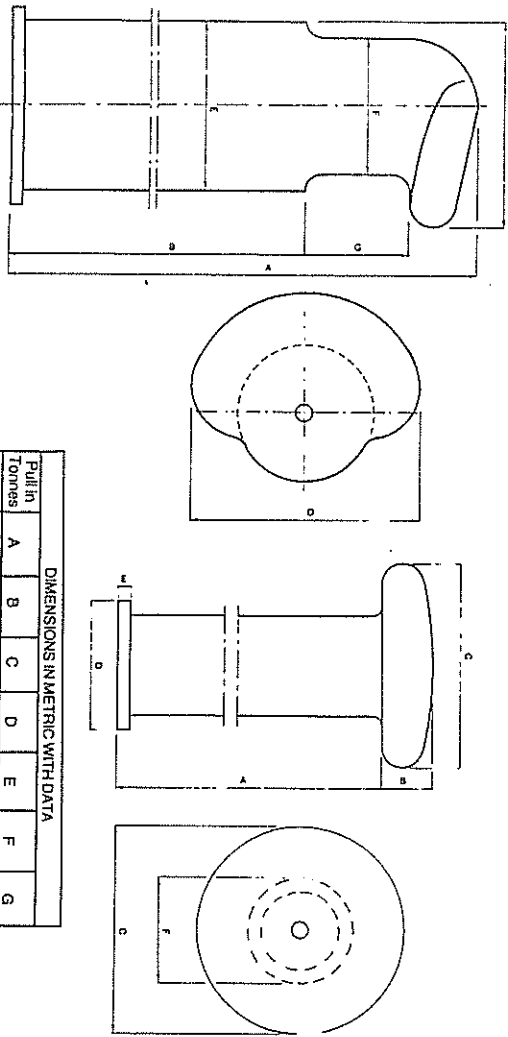
BOLLARDS

DUBBEL HORNED BOLLARD WITH RECTANGULAR BASE 20-50 TONS



DIMENSIONS IN METRIC WITH DATA										
Pull in Tonnas	A	B	C	D	E	F	G	H	No of Bolts	Dia Bolts
20	490	490	470	500	240	420	300	60	4	M45
50	440	850	550	500	300	525	205	75	6	M45

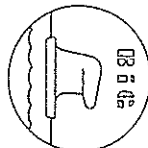
STORM BOLLARD FOR MASS CONCRETE 50-180 TONS



DIMENSIONS IN METRIC WITH DATA							
Pull in Tonnas	A	B	C	D	E	F	G
50	1300	150	600	380	40	300	-
180	2000	1500	600	670	500	400	300

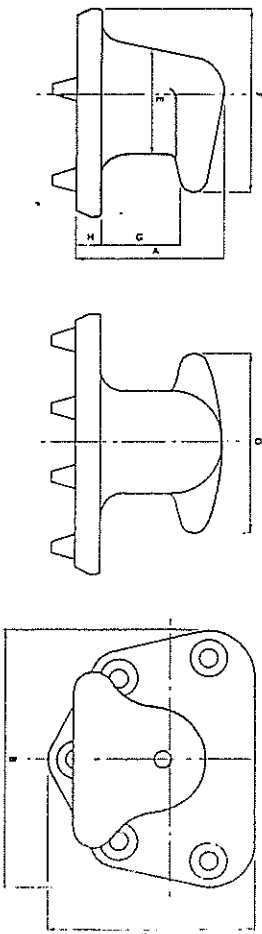
Postal address: Box 2044, S-422 02 Hisingns Backa, Sweden
 Visit address: Bällisrogatan 22, Hisingns Backa, Sweden
 Phone and Fax: +46 31-52 10 55
 Telex: 820 61 19, All: BYGGMAW
 Bankers: Göteborgs Banken
 Bank account: 500-7750
 Post account: 28 20 94-6

BYGGMA



BOLLARDS

TEE HEAD BOLLARD WITH D SHAPED BASE 10-150 TONS

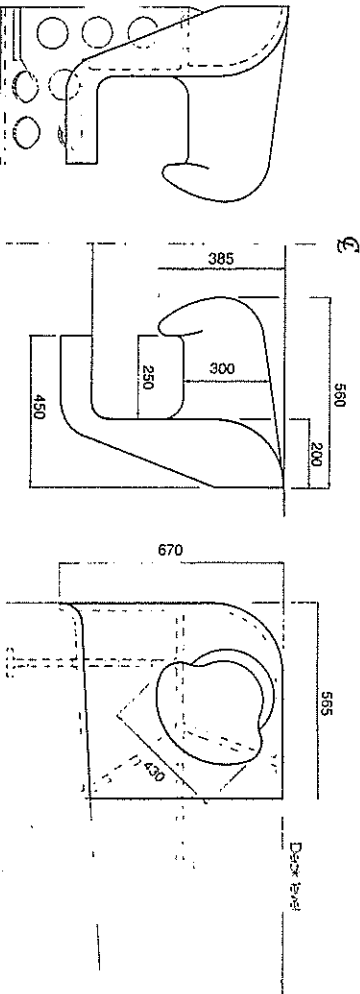


DIMENSIONS IN METRIC WITH DATA											
Pull in Tonnas	A	B	C	D	E	F	G	H	No of Bolts	Dia Bolts	
10	215	336	196	250	130	230	115	45	4	M22	
20	290	480	410	360	190	360	145	50	5	M30	
30	365	560	500	430	255	430	190	60	5	M38	
50	430	760	600	520	300	525	230	75	5	M50	
75	490	890	650	600	320	570	245	90	5	M64	
100	520	950	725	600	320	570	245	100	5	M70	
150	665	1080	900	800	430	830	350	110	7	M70	

50-150 tons with conical knobs to take horizontal shear forces.

RO-RO BOLLARD 50-100 TONS

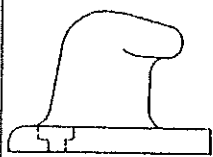
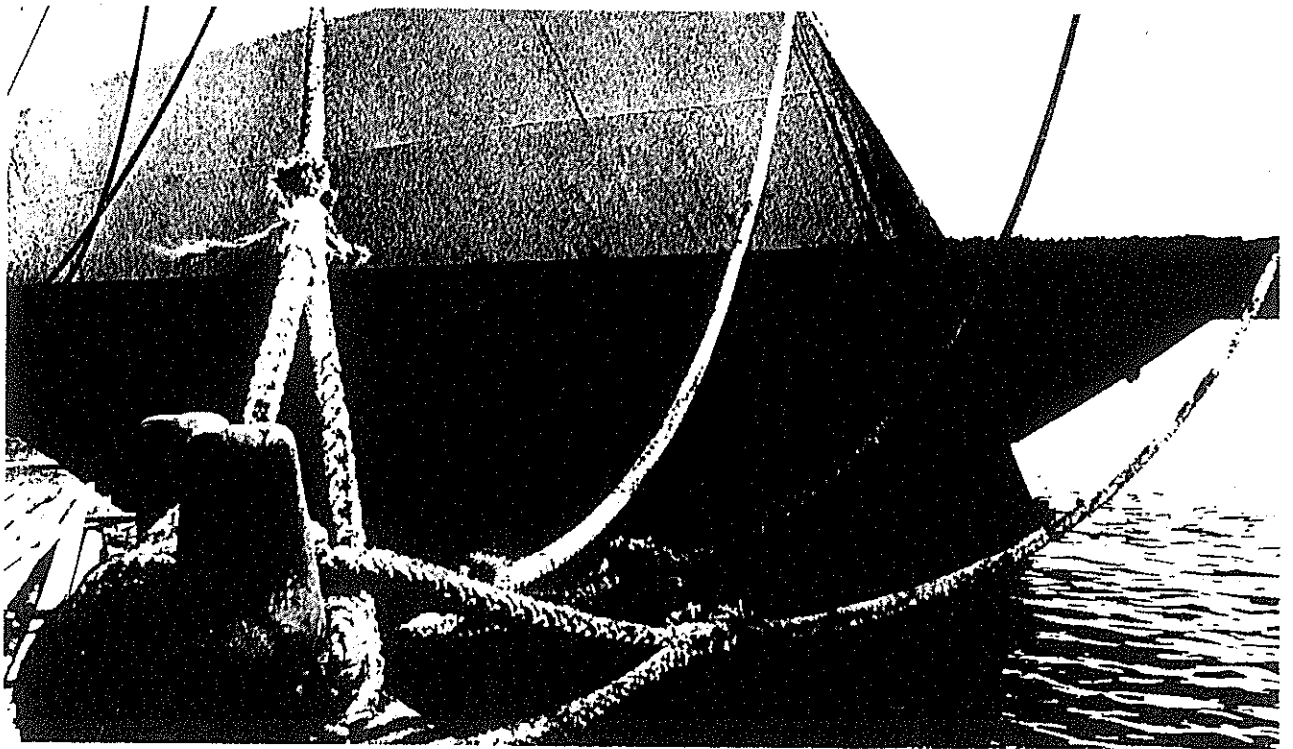
For application in front quay line under quay deck level.



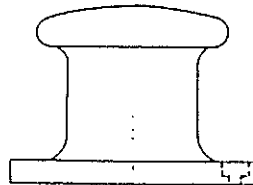
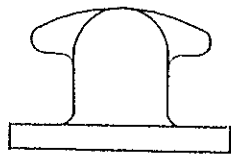
Postal address: Box 2044, S-422 02 Hisingns Backa, Sweden
 Visit address: Bällisrogatan 22, Hisingns Backa, Sweden
 Phone and Fax: +46 31-52 10 55
 Telex: 820 61 19, All: BYGGMAW
 Bankers: Göteborgs Banken
 Bank account: 500-7750
 Post account: 28 20 94-6

BEAN BOLLARDS in use throughout the world

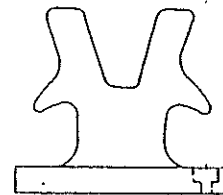
Specialists in the DESIGN and SUPPLY of ALL TYPES of MARINE BOLLARDS



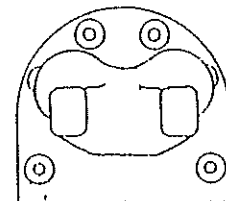
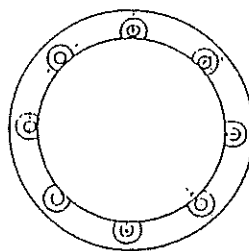
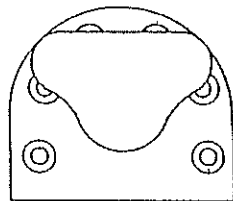
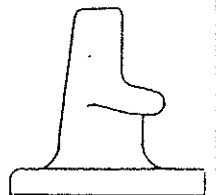
X TYPE



Y TYPE



TWIN HORN TYPE



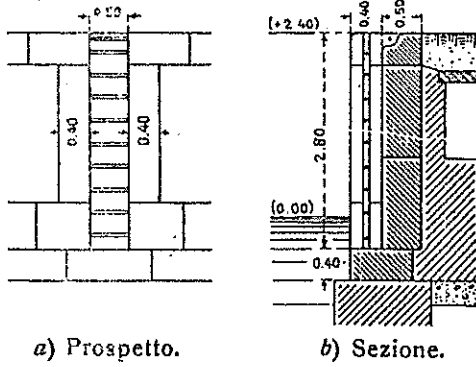
- The original designers of the "TWINHEAD" & "D" Base marine bollards
- Provides multiple mooring facilities. Ropes can be cast off independently
- Capacity from 10-250 ton guaranteed loads
- Special designs upon receipt of details
- Fastenings available for all units
- Also available, Cleats, Mooring Rings to dimensions and capacity required

Brochure available upon request
E J BEAN LIMITED

Bean House
26 Harriotts Lane
Ashtead, Surrey
KT21 2QH

Telephone: (03722) 76335/6
Telex: 8952192 EJBEAN G

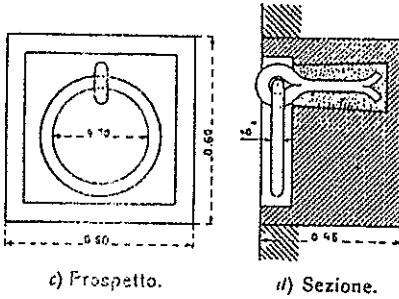
Fig. 404. — Scaletta d'ormeggio.
(1 : 100).



a) Prospetto.

b) Sezione.

Fig. 407. — Anello d'ormeggio.
(1 : 20).



c) Prospetto.

d) Sezione.

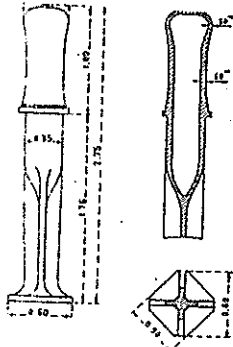


Fig. 405.
Colonna d'ormeggio. (1 : 50).

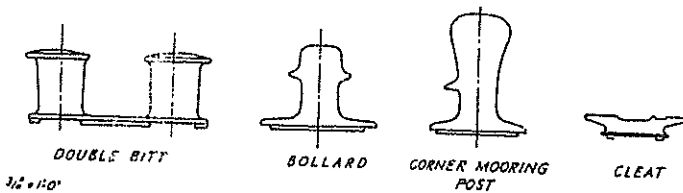
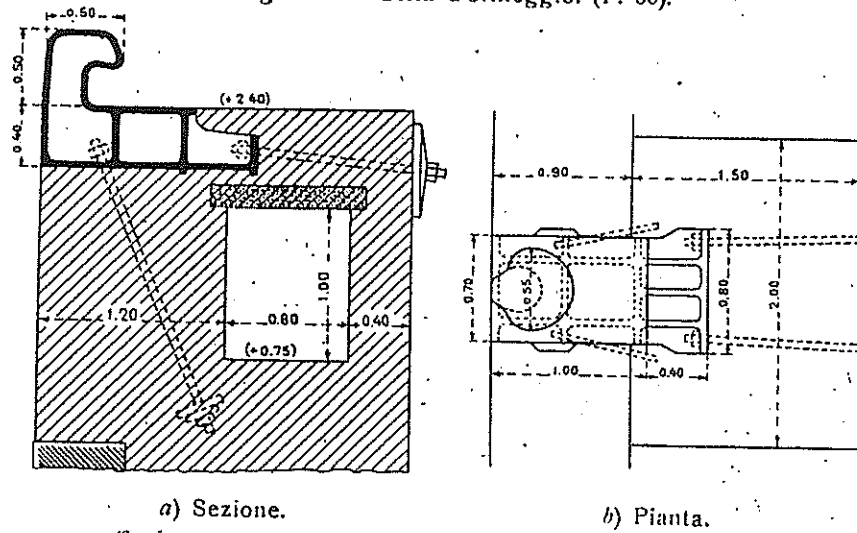


Fig. 406. — Bitta d'ormeggio.
(1 : 50).



a) Sezione.

b) Pianta.

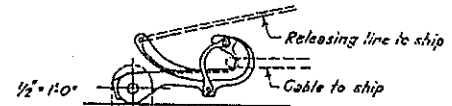
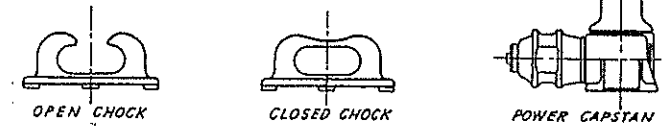
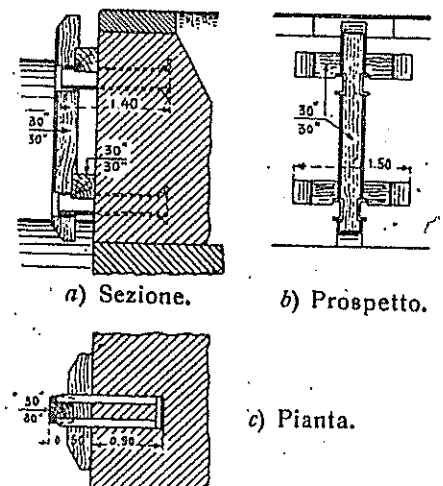


FIG. 5.85 Typical mooring accessories.

Fig. 401. — Parabordo.
(1 : 100).



a) Sezione.

b) Prospetto.

c) Pianta.

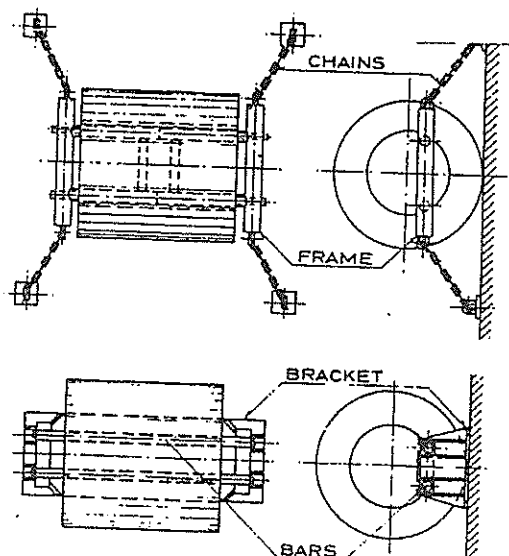


Fig. 8.7 (c) Installation Arrangement for Hollow Cylindrical Fenders